

forma de entregar datos
a la computadora es Maple.

lista 1, 5, -6, 8

$B := \text{lunes, martes, miercoles}$

$B_1;$	lunes	$B[1];$	lunes
$B_2;$	martes		
$B_3;$	miercoles		

$$\text{dia} := [B]$$

$$\text{Dia} := \{B\}$$

$$\text{solve}(f, inc) \quad \text{solve}(\{sis\}, \{inc\})$$

$f \Rightarrow$ ec. algebraica común

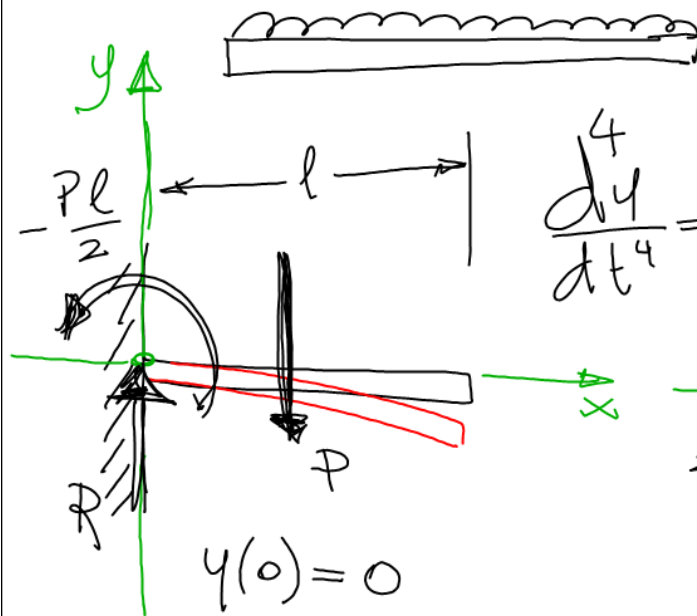
$\{sis\} \Rightarrow$ Ec. Simult.

$$\text{dsolve}(Ec., inc) \quad \text{Ecuación dif.}$$

$$\text{dsolve}(\{sis. ed\}, \{inc\}) \quad \text{Sist. Ec dif.}$$

$$\text{pdsolve}(KDP, inc) \quad \text{Ec. en Deriv. Parc.}$$

$$\text{pdsolve}(\{sis KDP\}, inc) \quad \text{Sis. Ec deriv Parc}$$

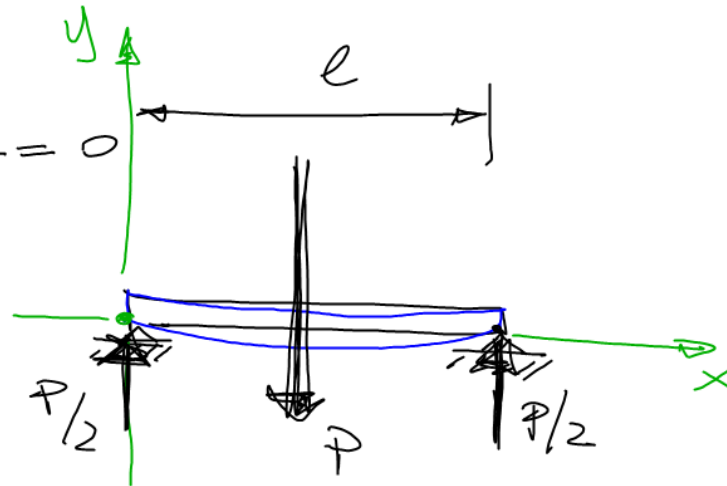


$$\frac{d^4 y}{dx^4} = 0$$

$$\begin{aligned} y(0) &= 0 \\ y'(0) &= 0 \\ y''(0) &= R \Rightarrow P \end{aligned}$$

$$y'''(0) = -\frac{Pl}{2}$$

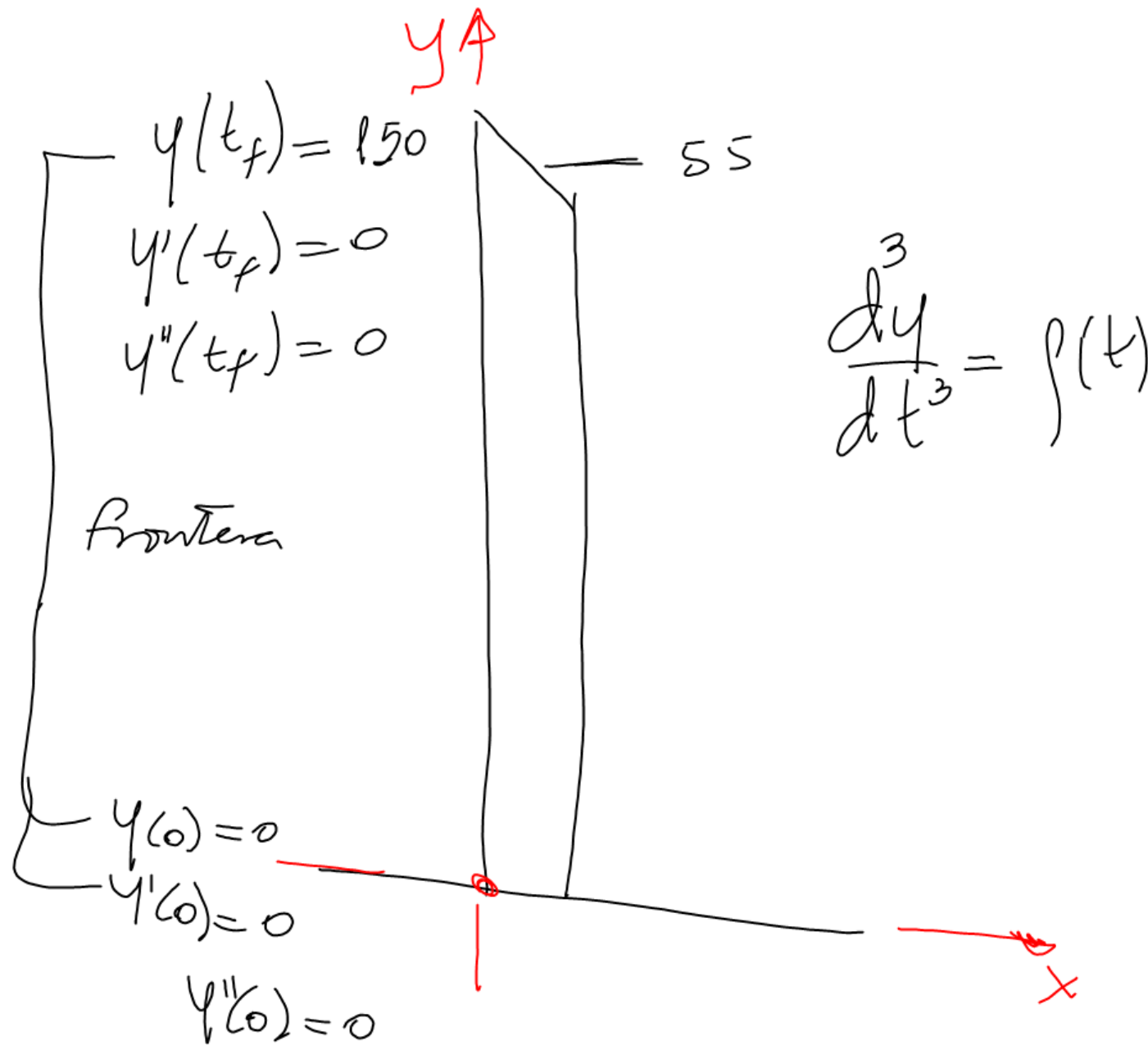
$x=0$ Condiciones
Iniciales



$$\begin{aligned} y(0) &= 0 & y(l) &= 0 \\ y''(0) &= \frac{P}{2} & y''(l) &= \frac{P}{2} \end{aligned}$$

$$x=0 \qquad x=l$$

Condiciones
en la frontera.



ursu/ @ unam.mx